



S.I KNIT COMPOSITE LTD

S.I Knit Composite Ltd.

100% Export-Oriented Garments Manufacturer



S.I KNIT COMPOSITE LTD. COMPANY PROFILE

CERTIFIED BY:



INDEX



S.N	CONENT	PAGE NO.
01	Director message	01
02	Who we are	02
03	About Us	03
04	Milestone & board of director	04
05	How we work	05
06	Performance & important establishments	06
07	Factory cutting section	07
08	Factory sewing section	08
09	Factory finishing section	09
10	Our main products	10
11	Category	11
12	T-Shirt	12
13	Polo Shirt	13
14	Company facilities	14
15	Company office	15
16	Company Organogram	16
17	Cultural program	17
18	Supplier of Raw Materials	18
19	Machinery in plant	19
20	Our Customer, Export Countries, Our Testing Labs, Dpi/fri By 3rd Party Company, Our Courier Service Provider, Our Affiliations, Banking Partner	20
21	Typical factory floor layout, Future Expansion Plan	21
22	Contact Person	22

MD. ABDUL AWAL

Managing Director
S.I Knit Composite Ltd.



I intend to make S.I Knit Composite Ltd. The best in Bangladesh and pursue this goal seriously as I am sure you pursue your goals with equal dedication. I have always intended at satisfying you by providing our best. It is my passion to deliver a world- class product. I made this happen, by personally involving myself and make ensure that every shipment meets the quality and standards. I am proud of our factories that are well furnished with the latest technology available.

I always strive to fulfill your expectation through the service of my company yet, if I have missed something or fallen short of meeting your expectations; please feel free to contact us at your convenience. I invite you to work with us and experience superior product quality and a group of dynamic work force. Warm regards and best wishes.

WHO WE ARE

We started as a middle garment manufacturing unit in Tongi, the industrial part of Gazipur in 2023. S.I Knit Composite Ltd. has been engaged in manufacturing & exporting apparel. Though relatively small compared to contemporary manufacturer in Bangladesh, Now we are a 100% export-oriented factory, highly skilled work force and a flexible production platform. We have always been committed in providing our customers with the highest quality Garments. Our product range jacket, outwear/2nd layer, sports wear by polyester's blended and bonded raw materials sweat-shirt, sweat pant/joggers, shorts and boxer, underwear all types of fleece item (Polar fleece, Micro fleece), TC/ CVC/ Recycle fabrics, blanket, soft shell, men's, ladies & kids-wear.



MISSION

To produce a wide range of apparels with exceptional price, innovative designs and value addition.



VISION

To provide total garments solution to enhance the business of our customers, concurrently developing better technologies that benefit both the customers and environment.

VALUES



COMMITMENT

We value our commitments for on time delivery, quality and sustainability.



EFFICIENCY

We set high efficiency standard to run our core functions to excel.



COMPLIANCE

We test our social & technical compliance rigorously & routinely for accountability & transparency.



ABOUT US

Statistics



420+

Number of Employee



95%

On Time Delivery



0.0%

Recheck / Rework



400,000

Production Capacity / Month



\$06,848,187

Exported Value 2023



4,240,000

Exported Quantity in 2023



MILESTONE & BOARD OF DIRECTOR

YEAR-2022

Production Capacity=10,000 Pcs/Day
Man Power: 340
Total Machine: 130 nos
Line: 4

2022

YEAR-2026

Production Capacity=15,500 Pcs/Day
Man Power: 420+
Total Machine: 160 nos
Line: 5

2026

Milestone





Manufacturing

Our dedicated teams ensure high quality and craftsmanship standard remains consistent whether order quantity is 1,000 or 100,000 pieces.

MOQ

Minimum order quantity is 3,000-5000 pieces per style & 1500-2000 Pieces per color. A large order Quantity allows higher efficiency at a reduced manufacturing cost.



Lead Time

- 90 days against local Raw material
- 120 days against imported Raw material

Process & Quality

A strict regime of internal audits, critical process check, and 3rd party testing on fabric / accessories / garments are done prior to shipment



Products

We manufacture value added and fashion products, Jacket, Outwear/2nd Layer, Sports Wear by polyester's blended and Bonded Raw materials Sweat-shirt, Sweat Pant/Joggers, Shorts and Boxer, Underwear all types of Fleece item (Polar Fleece, Micro Fleece), TC/ CVC/ Recycle Fabrics, Blanket, Soft Shell, Men's , Ladies & Kids-wear.

Design & Development

We can assist customer creating fits and design for garments. We offer choices of fabrication, wide range of accessories and different packaging method



ERP (Enterprise Resource Planning)

Our core functions are based on Enterprise Resource Planning (ERP). We strive continuously to reduce wastage of materials and increase production efficiency

HR Policy

We follow a strict Code of Conduct (COC) imbedded in our corporate HR. policy – a guideline to follow our company's rules and regulations and value every individual, including our employees and customers.



Electronic Payment System

Our electronic payment system for salary and bill payments has reduced cost, eased payment method, heightened security and reduced financial risk.

Performance

On Time Delivery



2026

Percentage- **99%**

Production in Pieces- **6,320,000**

2022

Percentage- **93%**

Production in Pieces- **5,410,000**

Recheck / Rework



Percentage- **1.75%**
Production in Pieces- **3,122,000**

2026

Percentage- **1.20%**
Production in Pieces- **1,560,000**

2022

Important Establishments



Fire Station

2.5 km

12 Min

Hospital

2.5 km

12 Min

Police Station

2.5 km

12 Min

Railway Station

2.5 km

12 Min

Bus Stand

2.5 km

12 Min

FACTORY CUTTING SECTION

Building type : Industrial shed building.

Number of floor : 1 (one).

Ground floor : Cutting section, & sample section.



Cutting Section



Fabric Cutting Machine



Fabric Cutting Machine



Fabric Cutting Table

FACTORY SEWING SECTION

Building type : 4 storied structure designed & built as industrial shed building.

Total floor area : 11,000 sq. Ft.

Number of floor : 1 (one).

Ground floor : 5 sewing lines in ground floor. Also doctors room, admin office inspection room, fire safety section, generator room, fire equipment box, compressor room, bonded warehouse and accessories warehouse in floor.

1st floor : 5 sewing lines in 1st floor

1st floor : Cutting section floor

1st floor : Finishing section floor

Some Photos of Our Factory Sewing Section



Sewing Section



Plain Machine



Button hole Machine



Flatlock Machine



Overlock Machine

FACTORY FINISHING SECTION

Building type : Industrial shed building.

Number of floor : 1 (one).

Ground floor : Finishing Section, Finishing Store &
18 KW Electric Steam Boiler Room.



Finishing Section



Iron Section



Finish Goods Area



Accessories Store

OUR MAIN PRODUCTS



Hoodie



Lady's villager



Jacket



Polo Shirt



Polo Shirt



T-Shirt



Polo Shirt



Winter Shirt



Half Shirt



All over shirt



Half Shirt



Joggers Pant



Long Pant

CATEGORY

HOODIE



POLO SHIRT



T- SHIRT



HALF SHIRT



T-SHIRT



POLO SHIRT



COMPANY FACILITIES



Fire safety



Wages and benefits



Working hour



No child labor



Life insurance coverage



Electric safety



Close monitoring



Inspection room



Sample section



Accessories store



Well equipped medical center

COMPANY OFFICE



Commercial ,Finance
& Accounts Department



Engineering Department

Factory Audit

amfori BSCI

AUDIT TYPE

Amfori BSCI

AUDIT DATE
17-November-2025

RESULT
C



AUDIT TYPE

Sedex-Smeta

AUDIT DATE
06-December-2025

RESULT
PASS



9001:2015

AUDIT TYPE

ISO 9001-2015

AUDIT DATE
14-December-2025

RESULT
PASS



AUDIT TYPE

OEKO-Tex

AUDIT DATE
Upcoming

RESULT
Upcoming



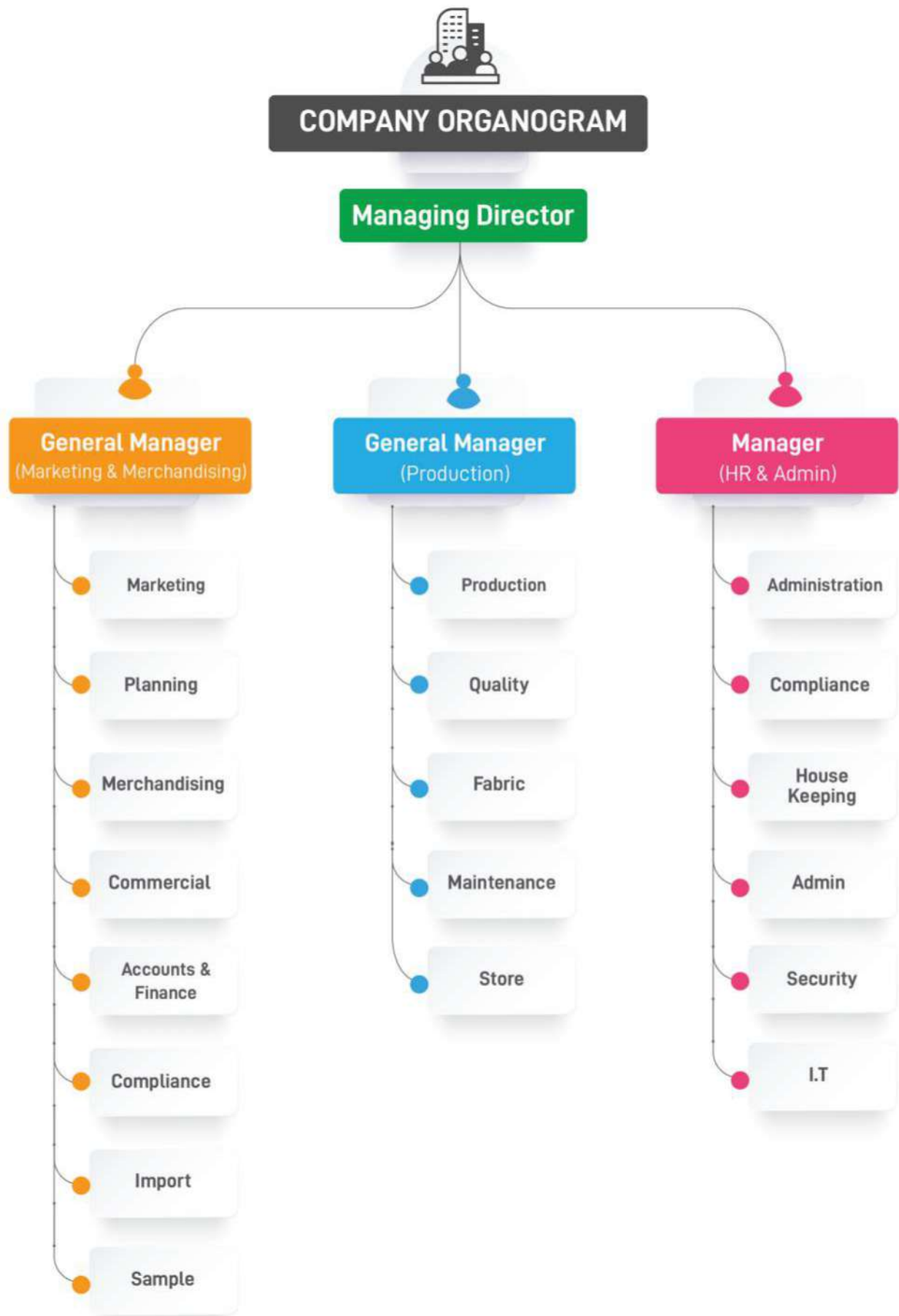
AUDIT TYPE

Membership
Certificate
of
BGMEA

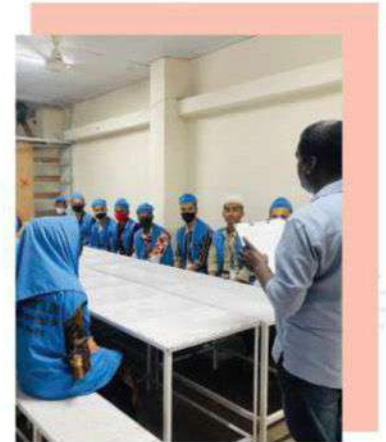
AUDIT DATE
05-February-2024

RESULT
PASS

COMPANY ORGANOGRAM



S.I Knit Composite Ltd.



S.I Knit Composite Ltd.





Total Machines- 160

List of Sewing Machines

MACHINES TYPE

QT.

Single Needle

50

Double Needle

04

Double Needle Lock Stitch

06

Vertical Trimmer

0

Over Lock: 4 – Thread

40

Over Lock: 5 – Thread

02

2 Needle Back tape

01

Flatlock Flat Bed

08

Flatlock Cylinder Bed

25

Flatlock F set Machine

0

Flatlock Compressor

0

Flatlock Nero Cylinder bed

0

Bar tack Machine

02

Button Attach

01

Snap Button

03

MACHINES TYPE

QT.

PMD KANSAI

01

Feed of long Arm

01

Flat Seamer Machine

0

Thread Trimmer

02

Rib Cutter

04

Velcro Cutter

0

Tape Feeder Machine

0

Pattern Sewing

0

Sucker Machine

01

Needle Detector

01

Cutting Machine

04

Lay Cutter

0

Fusing Machine

02

Heat Seal

02

CAD Machine

0

S.I KNIT COMPOSITE LTD.

100% Export-Oriented Garments Manufacturer

CONTACT PERSON

Md. Abdul Awal

Managing Director

info@sigarments.com

+88 01723941316

+88 02-9512544

Manager HR & Admin

S.I Knit Composite Ltd.

info@sigarments.com

+88 01765299187

Senior Merchandising & Marketing Manager

S.I Knit Composite Ltd.

mm@sigarments.com

+88 01675211918

ADDRESS



Corporate Office

House # 10, Road # 3/B
Sector # 9, Uttara
Dhaka-1230



Factory

23/2, Laskar Para, Sataish Tongi,
Gazipur, Dhaka - 1208,
Bangladesh



Head Office

House # 70, Nagar plaza, (3rd Floor)
Fulbaria Super market-2, Block# B,
Dhaka-1000



S.I KNIT COMPOSITE LTD

CONTACT US



info@sigarments.com



www.sigarments.com



+88 01765299187, +88 01602-137829,
+88 02-9512544

BANK



Uttara Bank PLC.



মিউচুয়াল ট্রাস্ট ব্যাংক লিমিটেড
Mutual Trust Bank Ltd.
you can bank on us

BRAC BANK

আমরা আছি



city bank
making sense of money

CERTIFIED BY:

amfori BSCI



SMETA



OEKO-TEX®
CONFIDENCE IN TEXTILES
STANDARD 100

