



S.I KNIT COMPOSITE LTD

# S.I Knit Composite Ltd.

100% Export-Oriented Garments Manufacturer



## S.I KNIT COMPOSITE LTD. COMPANY PROFILE

CERTIFIED BY:



# INDEX



S.N	CONENT	PAGE NO.
01	Director message	01
02	Who we are	02
03	About Us	03
04	Milestone & board of director	04
05	How we work	05
06	Performance & important establishments	06
07	Factory cutting section	07
08	Factory sewing section	08
09	Factory finishing section	09
10	Our main products	10
11	Category	11
12	T-Shirt	12
13	Polo Shirt	13
14	Company facilities	14
15	Company office	15
16	Company Organogram	16
17	Cultural program	17
18	Supplier of Raw Materials	18
19	Machinery in plant	19
20	Our Customer, Export Countries, Our Testing Labs, Dpi/fri By 3rd Party Company, Our Courier Service Provider, Our Affiliations, Banking Partner	20
21	Typical factory floor layout, Future Expansion Plan	21
22	Contact Person	22



### **MD. ABDUL AWAL**

**Managing Director**  
**S.I Knit Composite Ltd.**



I intend to make S.I Knit Composite Ltd. The best in Bangladesh and pursue this goal seriously as I am sure you pursue your goals with equal dedication. I have always intended at satisfying you by providing our best. It is my passion to deliver a world- class product. I made this happen, by personally involving myself and make ensure that every shipment meets the quality and standards. I am proud of our factories that are well furnished with the latest technology available.

I always strive to fulfill your expectation through the service of my company yet, if I have missed something or fallen short of meeting your expectations; please feel free to contact us at your convenience. I invite you to work with us and experience superior product quality and a group of dynamic work force. Warm regards and best wishes.

# WHO WE ARE

We started as a middle garment manufacturing unit in Tongi, the industrial part of Gazipur in 2023. S.I Knit Composite Ltd. has been engaged in manufacturing & exporting apparel. Though relatively small compared to contemporary manufacturer in Bangladesh, Now we are a 100% export-oriented factory, highly skilled work force and a flexible production platform. We have always been committed in providing our customers with the highest quality Garments. Our product range jacket, outwear/2nd layer, sports wear by polyester's blended and bonded raw materials sweat-shirt, sweat pant/joggers, shorts and boxer, underwear all types of fleece item (Polar fleece, Micro fleece), TC/ CVC/ Recycle fabrics, blanket, soft shell, men's, ladies & kids-wear.



## MISSION

To produce a wide range of apparels with exceptional price, innovative designs and value addition.



## VISION

To provide total garments solution to enhance the business of our customers, concurrently developing better technologies that benefit both the customers and environment.

## VALUES



### COMMITMENT

We value our commitments for on time delivery, quality and sustainability.



### EFFICIENCY

We set high efficiency standard to run our core functions to excel.



### COMPLIANCE

We test our social & technical compliance rigorously & routinely for accountability & transparency.





# ABOUT US

## Statistics



**420+**

Number of Employee



**95%**

On Time Delivery



**0.0%**

Recheck / Rework



**400,000**

Production Capacity / Month



**\$06,848,187**

Exported Value 2023



**4,240,000**

Exported Quantity in 2023



## MILESTONE & BOARD OF DIRECTOR

### YEAR-2022

Production Capacity=10,000 Pcs/Day  
Man Power: 340  
Total Machine: 130 nos  
Line: 4

2022

### YEAR-2026

Production Capacity=15,500 Pcs/Day  
Man Power: 420+  
Total Machine: 180 nos  
Line: 8

2026

## Milestone







## Manufacturing

Our dedicated teams ensure high quality and craftsmanship standard remains consistent whether order quantity is 1,000 or 100,000 pieces.

## MOQ

Minimum order quantity is 3,000-5000 pieces per style & 1500-2000 Pieces per color. A large order Quantity allows higher efficiency at a reduced manufacturing cost.



## Lead Time

- 90 days against local Raw material
- 120 days against imported Raw material

## Process & Quality

A strict regime of internal audits, critical process check, and 3rd party testing on fabric / accessories / garments are done prior to shipment



## Products

We manufacture value added and fashion products, Jacket, Outwear/2nd Layer, Sports Wear by polyester's blended and Bonded Raw materials Sweat-shirt, Sweat Pant/Joggers, Shorts and Boxer, Underwear all types of Fleece item (Polar Fleece, Micro Fleece), TC/ CVC/ Recycle Fabrics, Blanket, Soft Shell, Men's , Ladies & Kids-wear.

## Design & Development

We can assist customer creating fits and design for garments. We offer choices of fabrication, wide range of accessories and different packaging method



## ERP (Enterprise Resource Planning)

Our core functions are based on Enterprise Resource Planning (ERP). We strive continuously to reduce wastage of materials and increase production efficiency

## HR Policy

We follow a strict Code of Conduct (COC) imbedded in our corporate HR. policy – a guideline to follow our company's rules and regulations and value every individual, including our employees and customers.



## Electronic Payment System

Our electronic payment system for salary and bill payments has reduced cost, eased payment method, heightened security and reduced financial risk.

## Performance

### On Time Delivery



**2026** Percentage- **99%**  
Production in Pieces- **6,320,000**

**2022** Percentage- **93%**  
Production in Pieces- **5,410,000**

### Recheck / Rework



**2026** Percentage- **1.75%**  
Production in Pieces- **3,122,000**

**2022** Percentage- **1.20%**  
Production in Pieces- **1,560,000**

## Important Establishments



**Fire Station**

2.5 km

12 Min

**Hospital**

2.5 km

12 Min

**Police Station**

2.5 km

12 Min

**Railway Station**

2.5 km

12 Min

**Bus Stand**

2.5 km

12 Min



## FACTORY CUTTING SECTION

**Building type** : Industrial shed building.

**Number of floor** : 1 (one).

**Ground floor** : Cutting section, & sample section.



**Cutting Section**



**Fabric Cutting Machine**



**Fabric Cutting Machine**



**Fabric Cutting Table**



# FACTORY SEWING SECTION

**Building type** : 4 storied structure designed & built as industrial shed building.

**Total floor area** : 11,000 sq. Ft.

**Number of floor** : 1 (one).

1st floor : 8 sewing lines in 1st floor

1st floor : Cutting section floor

1st floor : Finishing section floor

Unit-2 : Cutting section

## Some Photos of Our Factory Sewing Section



**Sewing Section**



**Plain Machine**



**Button hole Machine**



**Flatlock Machine**



**Overlock Machine**



# FACTORY FINISHING SECTION

**Building type** : Industrial shed building.

**Number of floor** : 1 (one).

**Ground floor** : Finishing Section, Finishing Store &  
18 KW Electric Steam Boiler Room.



Finishing Section



Iron Section



Finish Goods Area



Accessories Store



## OUR MAIN PRODUCTS



Hoodie



Lady's villager



Jacket



Polo Shirt



Polo Shirt



T-Shirt



Polo Shirt



Winter Shirt



Half Shirt



All over shirt



Long Pant



Half Shirt



Joggers Pant



## CATEGORY

### HOODIE



### POLO SHIRT



### T- SHIRT



### HALF SHIRT





# T-SHIRT





# POLO SHIRT



# COMPANY FACILITIES



**Fire safety**



**Wages and benefits**



**Working hour**



**No child labor**



**Life insurance coverage**



**Electric safety**



**Close monitoring**



**Inspection room**



**Sample section**



**Accessories store**



**Well equipped medical center**



## COMPANY OFFICE



Commercial ,Finance  
& Accounts Department



Engineering Department

## Factory Audit

**amfori**  BSCI

AUDIT TYPE

Amfori BSCI

AUDIT DATE  
17-November-2025

RESULT  
C



AUDIT TYPE

Sedex-Smeta

AUDIT DATE  
06-December-2025

RESULT  
PASS



9001:2015

AUDIT TYPE

ISO 9001-2015

AUDIT DATE  
14-December-2025

RESULT  
PASS

OEKO-TEX®  
CONFIDENCE IN TEXTILES  
STANDARD 100 

AUDIT TYPE

OEKO-Tex

AUDIT DATE  
Upcoming

RESULT  
Upcoming



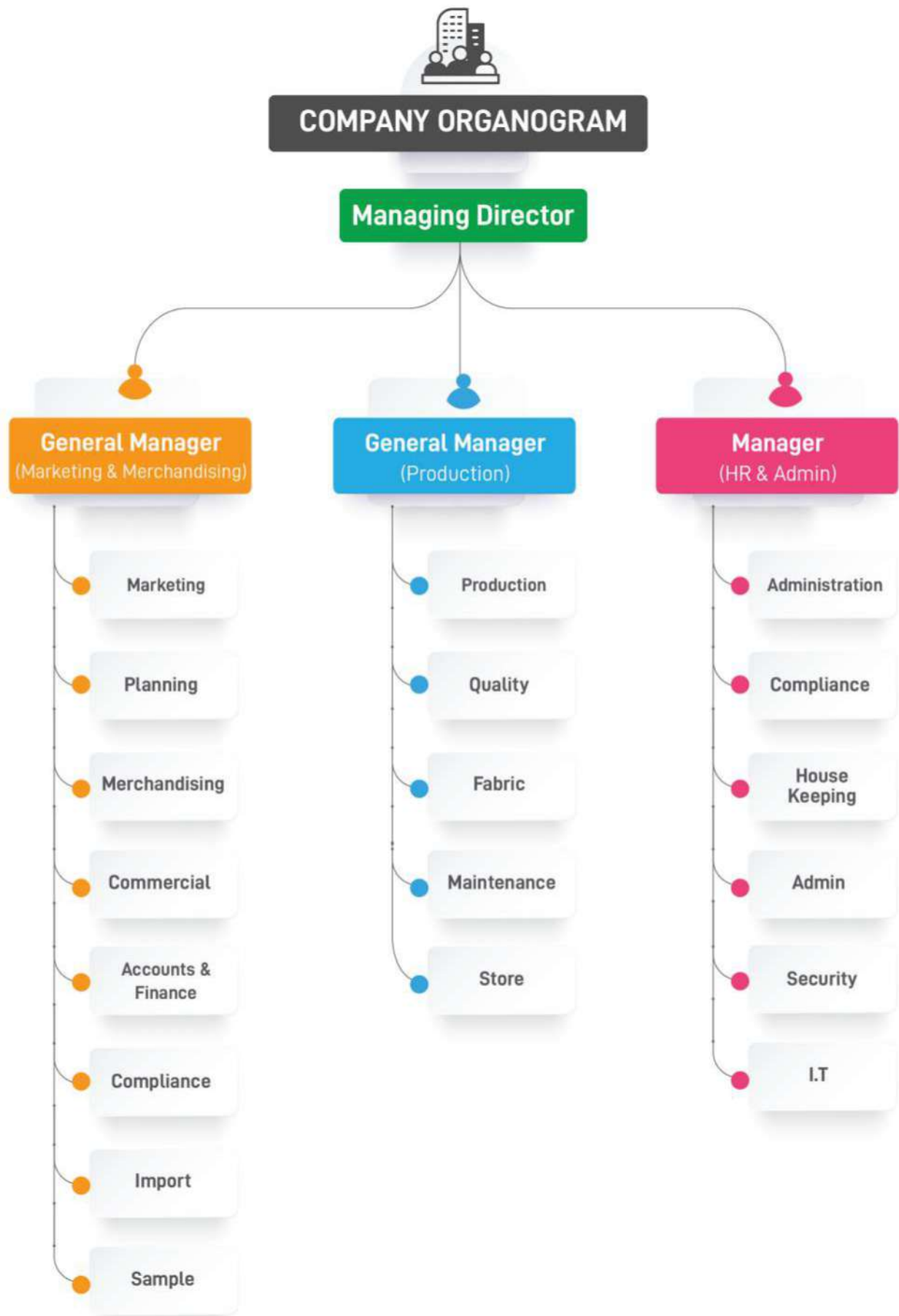
AUDIT TYPE

Membership  
Certificate  
of  
BGMEA

AUDIT DATE  
05-February-2024

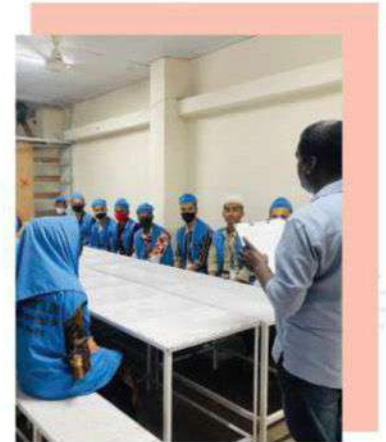
RESULT  
PASS

# COMPANY ORGANOGRAM





**S.I Knit Composite Ltd.**



**S.I Knit Composite Ltd.**





## Total Machines- 180

### List of Sewing Machines

#### MACHINES TYPE

#### QT.

Single Needle

80

Double Needle

04

Double Needle Lock Stitch

06

Vertical Trimmer

0

Over Lock: 4 – Thread

40

Over Lock: 5 – Thread

02

2 Needle Back tape

01

Flatlock Flat Bed

0

Flatlock Cylinder Bed

25

Flatlock F set Machine

0

Flatlock Compressor

0

Flatlock Nero Cylinder bed

0

Bar tack Machine

02

Button Attach

01

Snap Button

03

#### MACHINES TYPE

#### QT.

PMD KANSAI

01

Feed of long Arm

01

Flat Seamer Machine

0

Thread Trimmer

02

Rib Cutter

04

Velcro Cutter

0

Tape Feeder Machine

0

Pattern Sewing

0

Sucker Machine

01

Needle Detector

01

Cutting Machine

04

Lay Cutter

0

Fusing Machine

02

Heat Seal

02

CAD Machine

0



# S.I KNIT COMPOSITE LTD.

100% Export-Oriented Garments Manufacturer

## CONTACT PERSON

### Md. Abdul Awal

Managing Director

info@sigarments.com

+88 01723941316

+88 02-9512544

### Manager HR & Admin

S.I Knit Composite Ltd.

info@sigarments.com

+88 01765299187

### Senior Merchandising & Marketing Manager

S.I Knit Composite Ltd.

mm@sigarments.com

+88 01675211918

## ADDRESS



### Corporate Office

House # 10, Road # 3/B  
Sector # 9, Uttara  
Dhaka-1230



### Factory

23/2, Laskar Para, Sataish Tongi,  
Gazipur, Dhaka - 1208,  
Bangladesh



### Head Office

House # 70, Nagar plaza, (3rd Floor)  
Fulbaria Super market-2, Block# B,  
Dhaka-1000



S.I KNIT COMPOSITE LTD

## CONTACT US



info@sigarments.com



www.sigarments.com



+88 01765299187, +88 01602-137829,  
+88 02-9512544

## BANK



Uttara Bank PLC.



মিউচুয়াল ট্রাস্ট ব্যাংক লিমিটেড  
Mutual Trust Bank Ltd.  
you can bank on us

BRAC BANK

আমরা আছি



city bank  
making sense of money

## CERTIFIED BY:

amfori BSCI



SMETA



OEKO-TEX®  
CONFIDENCE IN TEXTILES  
STANDARD 100

